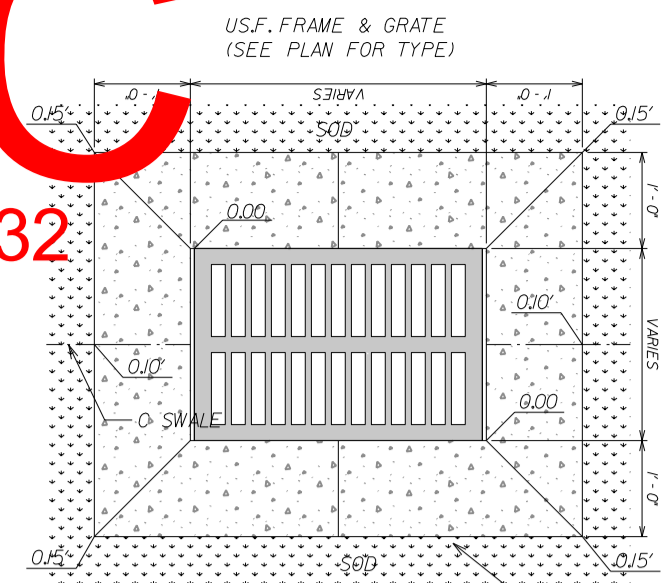
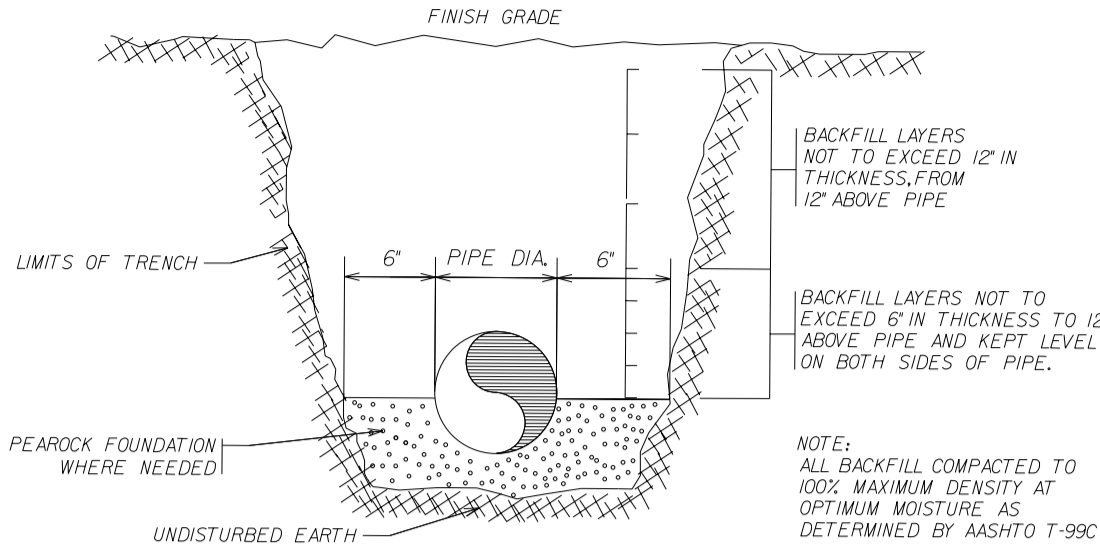


DRC

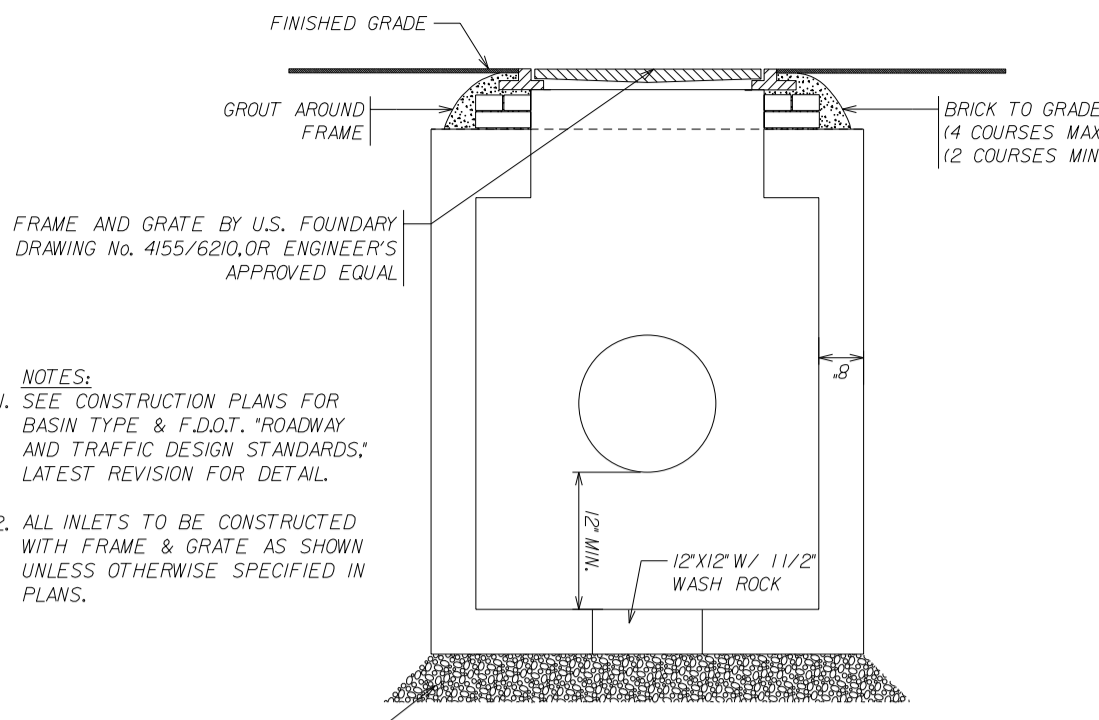
PZ23-12000032
08/07/2024



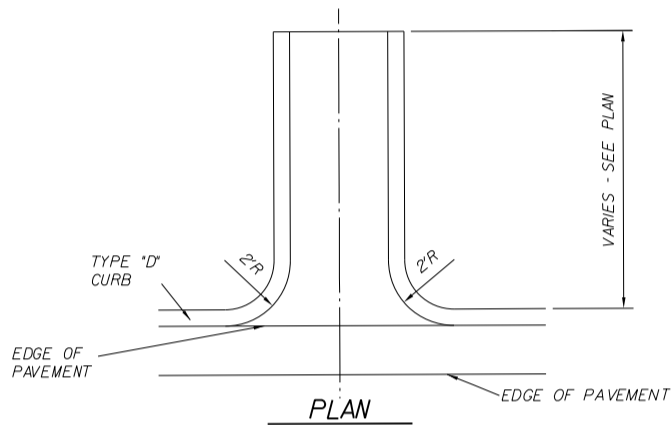
CONCRETE APRON DETAIL



PIPE BEDDING DETAIL

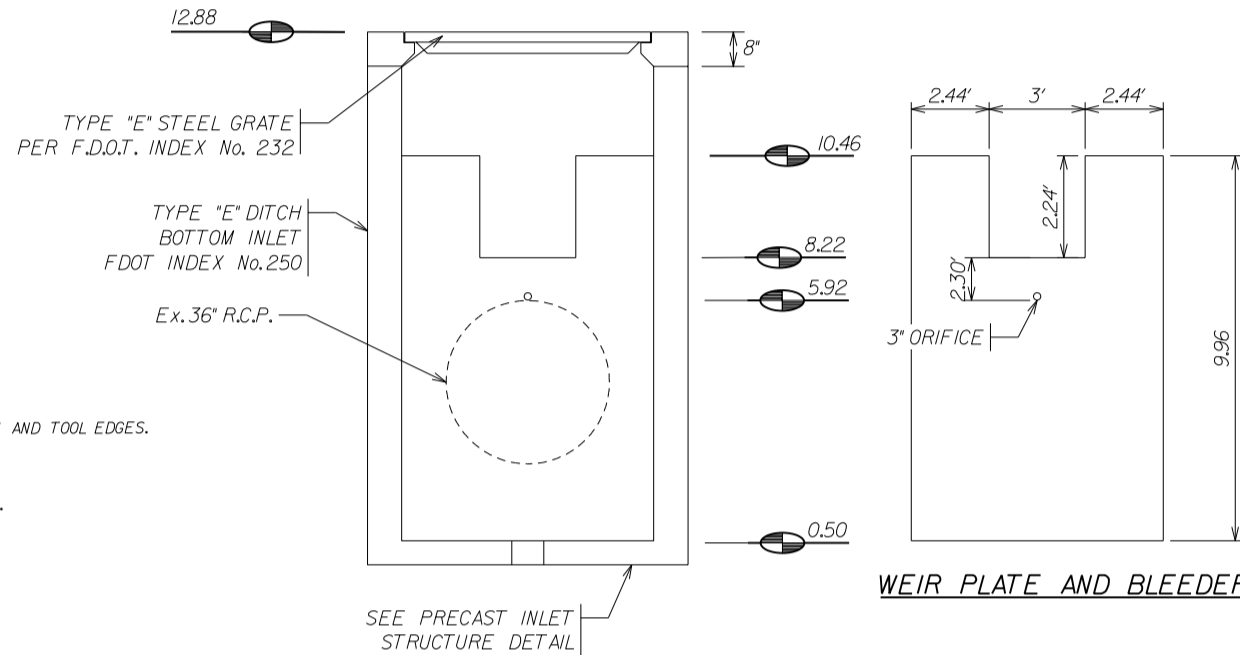


PRECAST INLET DETAIL

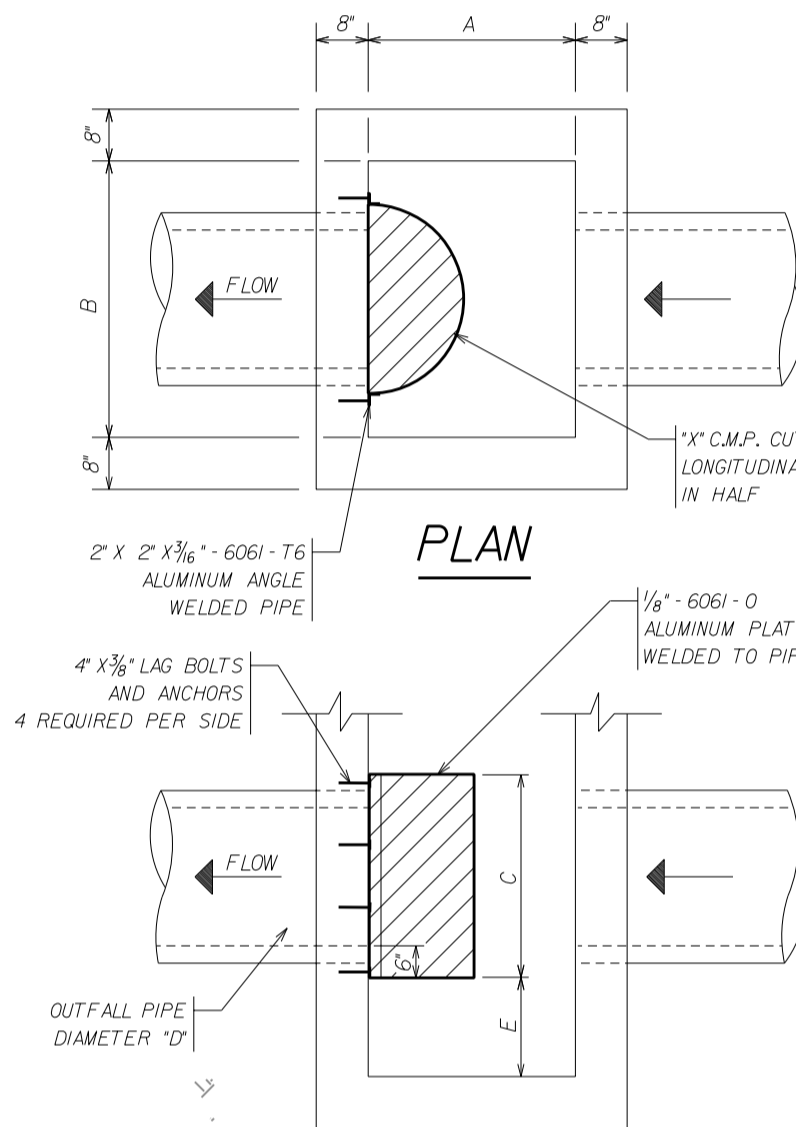


CONCRETE FLUME DETAIL

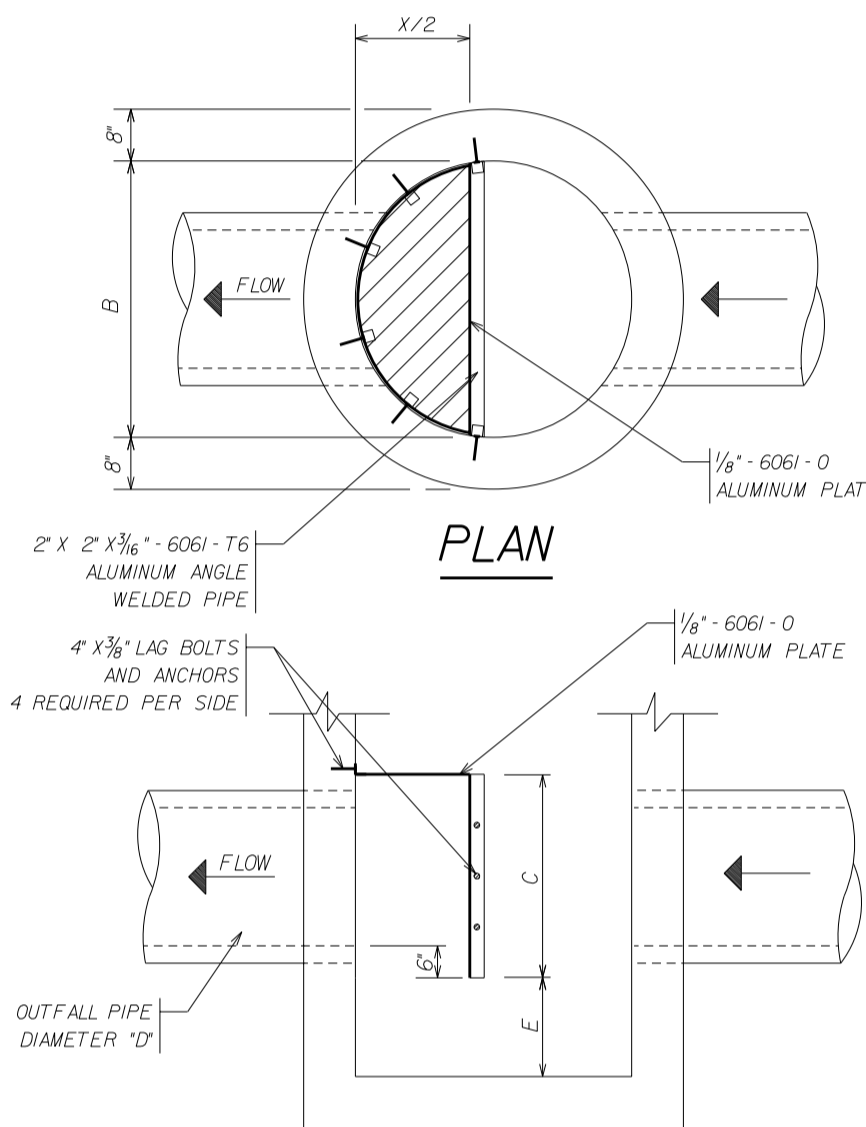
- NOTES:
- CONCRETE SHALL BE 3000 P.S.I. MIN. 28 DAYS, BROOM FINISH AND TOOL EDGES.
 - SLOPE OF FLUME SHALL MATCH PROPOSED GRADES.
 - FLUME SHALL BE CONSTRUCTED ON A COMPACTED SUBGRADE.



PHASE 2 CONTROL STRUCTURE DETAIL



RECTANGULAR STRUCTURE



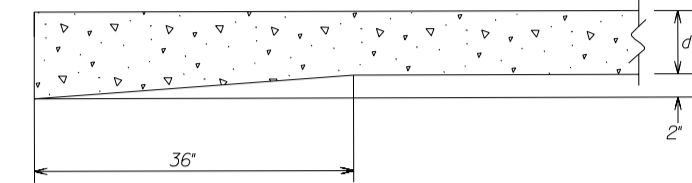
CIRCULAR STRUCTURE

BAFFLE SCHEDULE					
D	A	B	C	E	X
15'	24"	37"	2'-3"	1'-6"	18"
18'	24"	37"	2'-6"	1'-6"	24"
21'	36"	36"	2'-9"	1'-6"	27"
24'	36"	36"	3'-0"	1'-6"	30"
30'	36"	42"	3'-6"	1'-7"	36"
36'	42"	54"	4'-0"	2'-2"	48"
42'	48"	60"	4'-8"	2'-6"	54"
48'	48"	66"	5'-0"	2'-10"	60"

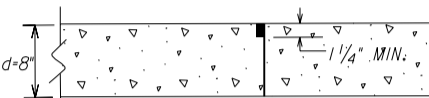
POLLUTION RETARDANT
BASIN DETAIL

DRC

PZ23-12000032
09/18/2024
ISOLATION JOINTS



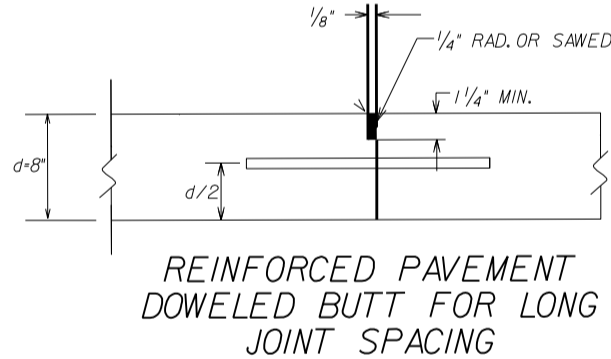
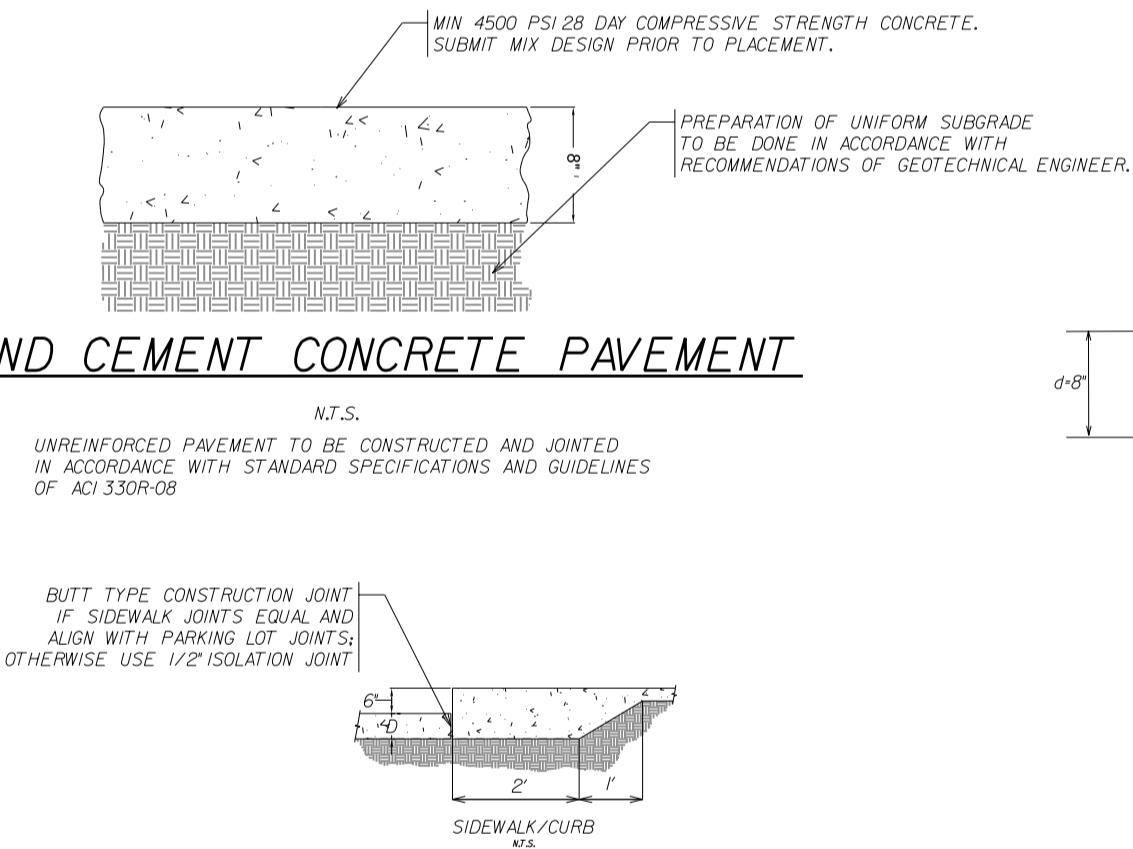
THICKENED SLAB
THICKENED EDGE



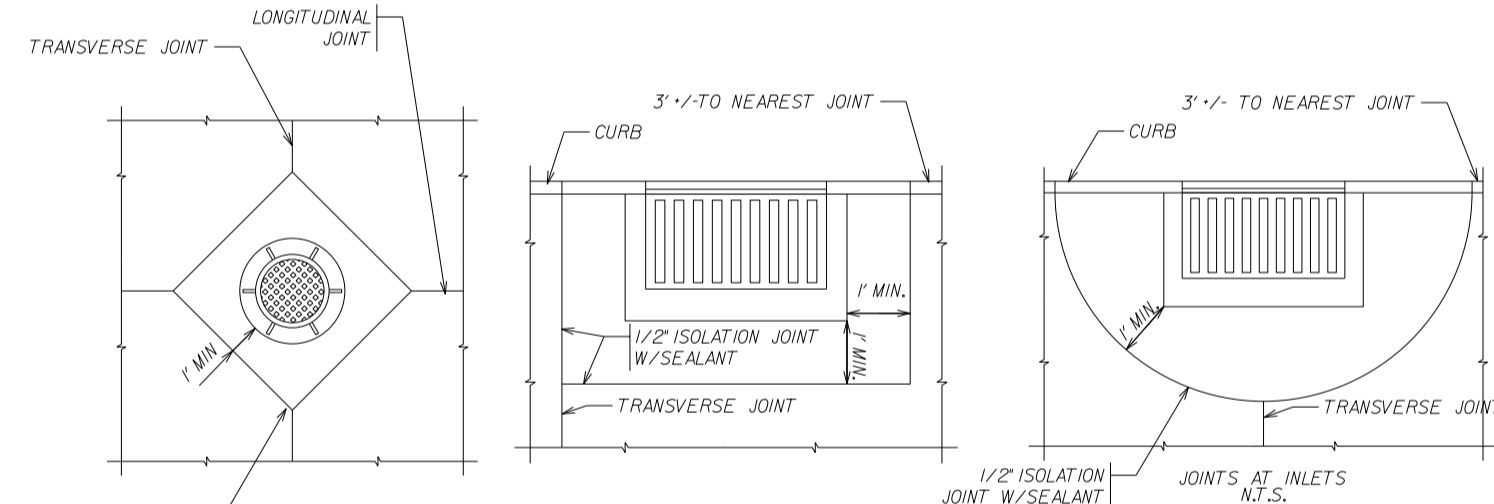
BUTT JOINT

CONTROL JOINT
DETAILS

PORTLAND CEMENT CONCRETE PAVEMENT

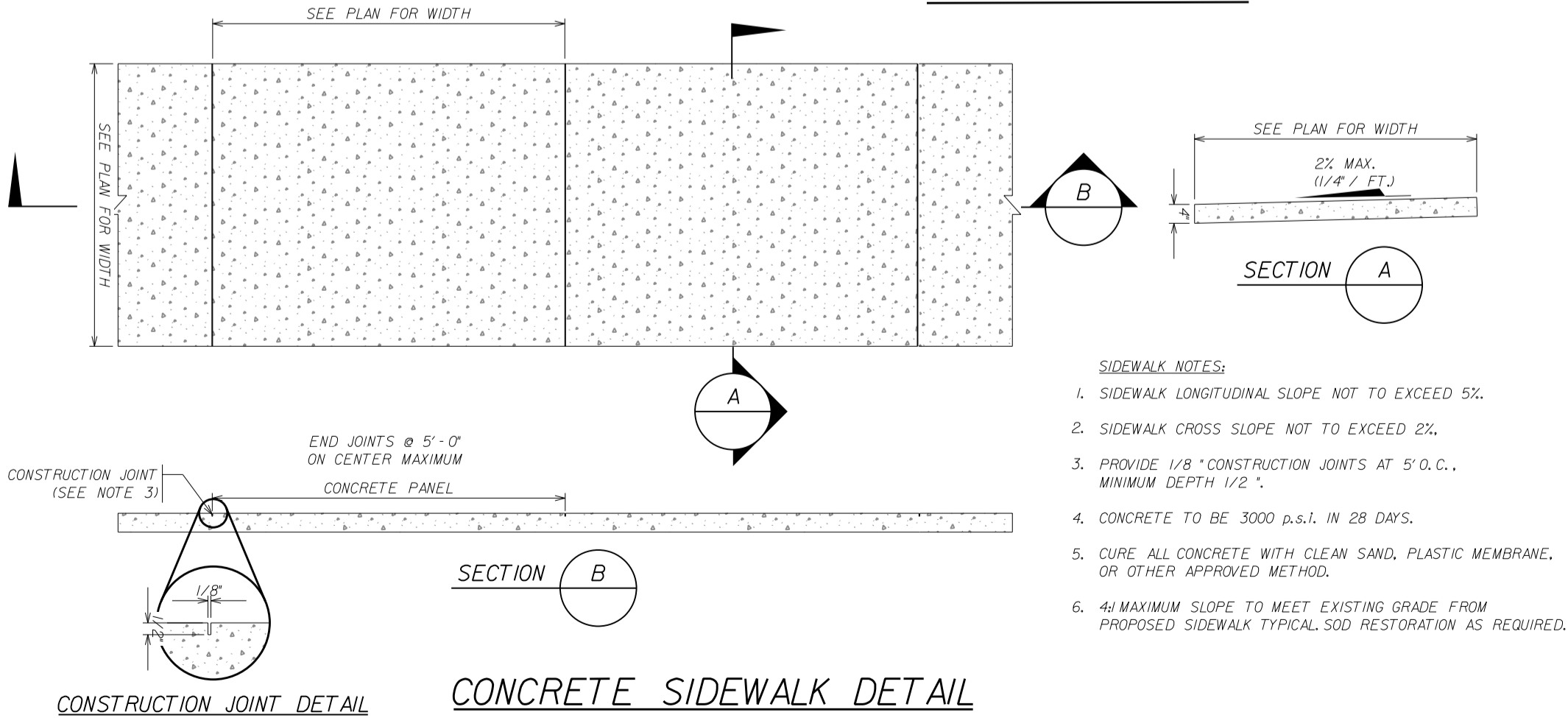


REINFORCED PAVEMENT
DOWELED BUTT FOR LONG
JOINT SPACING

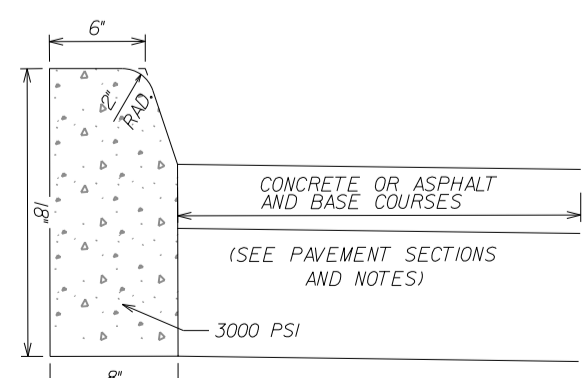


FIXTURE DETAILS

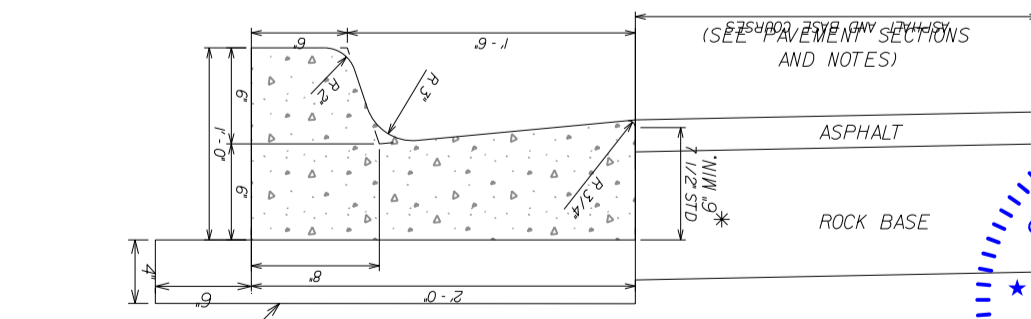
FLUSH HEADER CURB DETAIL



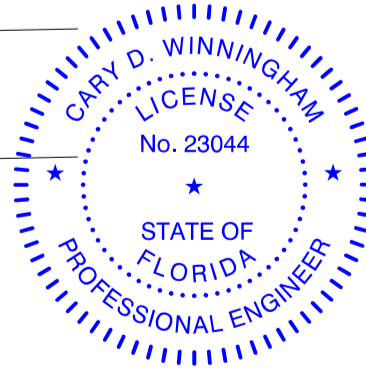
CONCRETE SIDEWALK DETAIL



TYPE "D" CURB DETAIL



TYPE "F" CURB & GUTTER



This item has been electronically signed and sealed with a Digital Signature by:
Cary D Winningham
2023.06.01 12:39:04 -0400
Printed copies of this document are not considered signed and sealed and must be verified on any electronic copies.

PHASE 1 - SITE IMPROVEMENT DETAILS					
BONSAL POMPARO OLDCASTLE COASTAL					
WINNINGHAM & BRADLEY, INC. ENGINEERS, PLANNERS, ARCHITECTS, SURVEYORS 111 N.E. 44th STREET, OAKLAND, FL 32177 TEL: 321.244.0000 FAX: 321.244.0001 WWW.WBINC.COM					
DESIGNED: CJD/GSB	DATE: 08/20/2019	PROVIDED: EB-0002995 LB-0002995	DRC		
DRAWN: AMF	DATE: 08/20/2019				
CHECKED: WTV	DATE: 12/20/2019				
PUBLISHED: 6/11/2023, 10:37		PROJECT NUMBER: 16-008	SHEET: 15	OF: 3	

PZ23-12000032
10/04/2023

DRC

PZ23-12000032
04/17/2024

\\PZ23-12000032\Bonsal_Pomparo\Drawings\2023\04-17\Phase 10B-2-Detail\p10b2.dwg